



BELVEDERE ROAD

Ipswich, IP4 • Exclusive 3-Bedroom New Build

- Detached
- Highly Desired Residential IP4 Location
- 3 Light-Filled Family Bedrooms
- High-Specification Integrated Kitchen Suite
- Eco-Friendly Air Source Heat Pump Installation
- Dedicated Private Off-Road Parking Space
- Comprehensive 10-Year Structural Defect Warranty

Guide Price:

£384,999

Contact Us



629 Foxhall Rd,
Ipswich, IP3 8NE



01473 598860



info@stainesstates.co.uk



www.stainesstates.co.uk

01473 598860

info@stainesstates.co.uk

SPECS:

Tenure	Freehold
Heating Type	Air Source Heat Pump
Glazing	High Performance Double Glazed
Parking	Private Driveway Allocated
Warranty	10-Year Structural Cover
EPC	A (Subject to change)
Total sq ft	1300 (approx)



SPACIOUS MAIN LIVING ROOM HUB

An expanse of space oriented around natural light channels, presenting direct options for relaxation and versatile furniture placement layout styling.



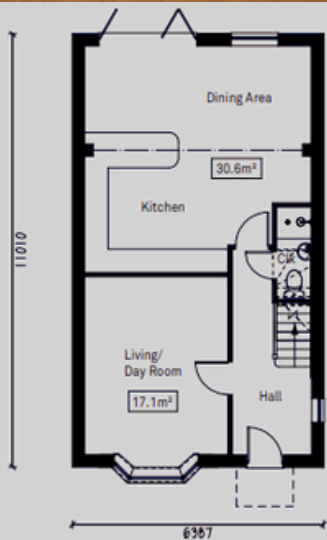
BESPOKE DESIGN FAMILY BATHROOM

Sumptuous sanitaryware selection coupled with premium surface tiling work, modern architectural brassware details, and a shower system.

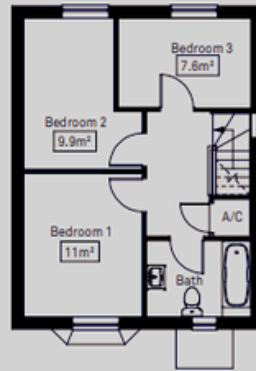


PRINCIPAL SANCTUARY BEDROOM

The first floor accommodates three stunning bedrooms, including an elegant family bathroom.



Ground Floor Plan



First Floor Plan



www.stainesstates.co.uk
01473 598860
info@stainesstates.co.uk

The images shown are 3D renderings and are intended for illustrative purposes only. Final designs, layouts, specifications, materials, landscaping, and finishes may vary from those shown.